

420 ORCHARD STREET

420 S. ORCHARD STREET | BOISE 83705



CENTRAL LOCATION

FOR LEASE | 2,687 SQUARE FEET

PROPERTY INFORMATION:

Submarket:	Central	# of Floors:	One
Bldg Type:	Office	Parking:	Ample
Bldg Size:	10,500 SF	Zoning:	L-OD
Quality:	Class B	Lease Type:	FSEJ

AVAILABLE SPACE:

SPACE:	RSF:	RATE:
Suite TBD	2,687 SF	\$14.00/FSEJ

CONTACT:

Chris Pearson, SIOR

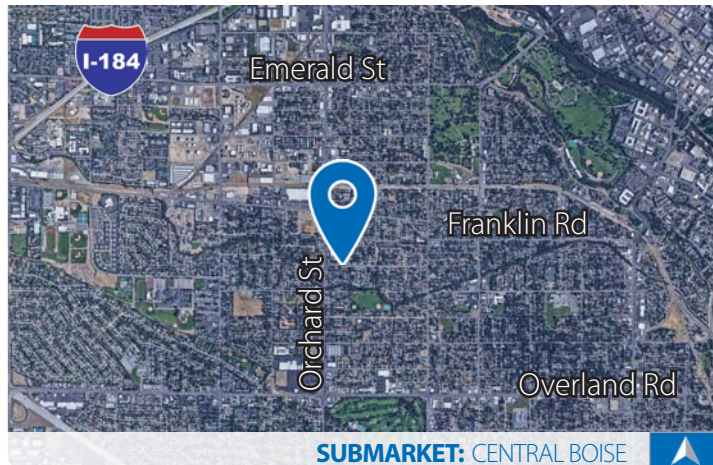
208.947.0859

✉ chris@tokcommercial.com

Laurie Reynoldson, CCIM, CLS

208.947.5514

✉ laurie@tokcommercial.com



SUBMARKET: CENTRAL BOISE

LISTING COMMENTS:

Newer building close to St. Al's Regional Medical Center and Downtown Boise.

Unique building upgrades including relaxing patio space.

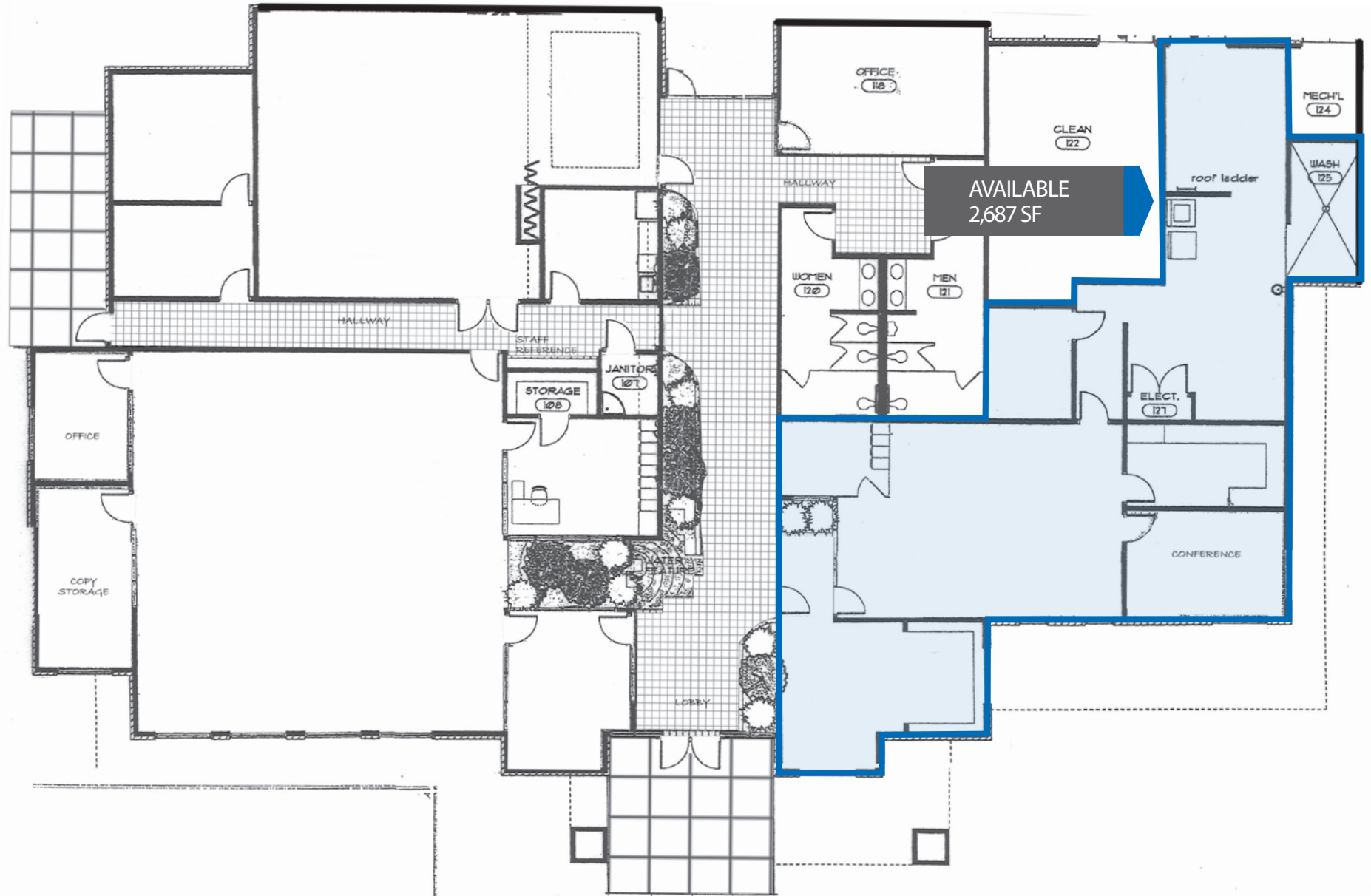
Opportunity to customize interior finishes.

Building signage available.

Free on-site parking.

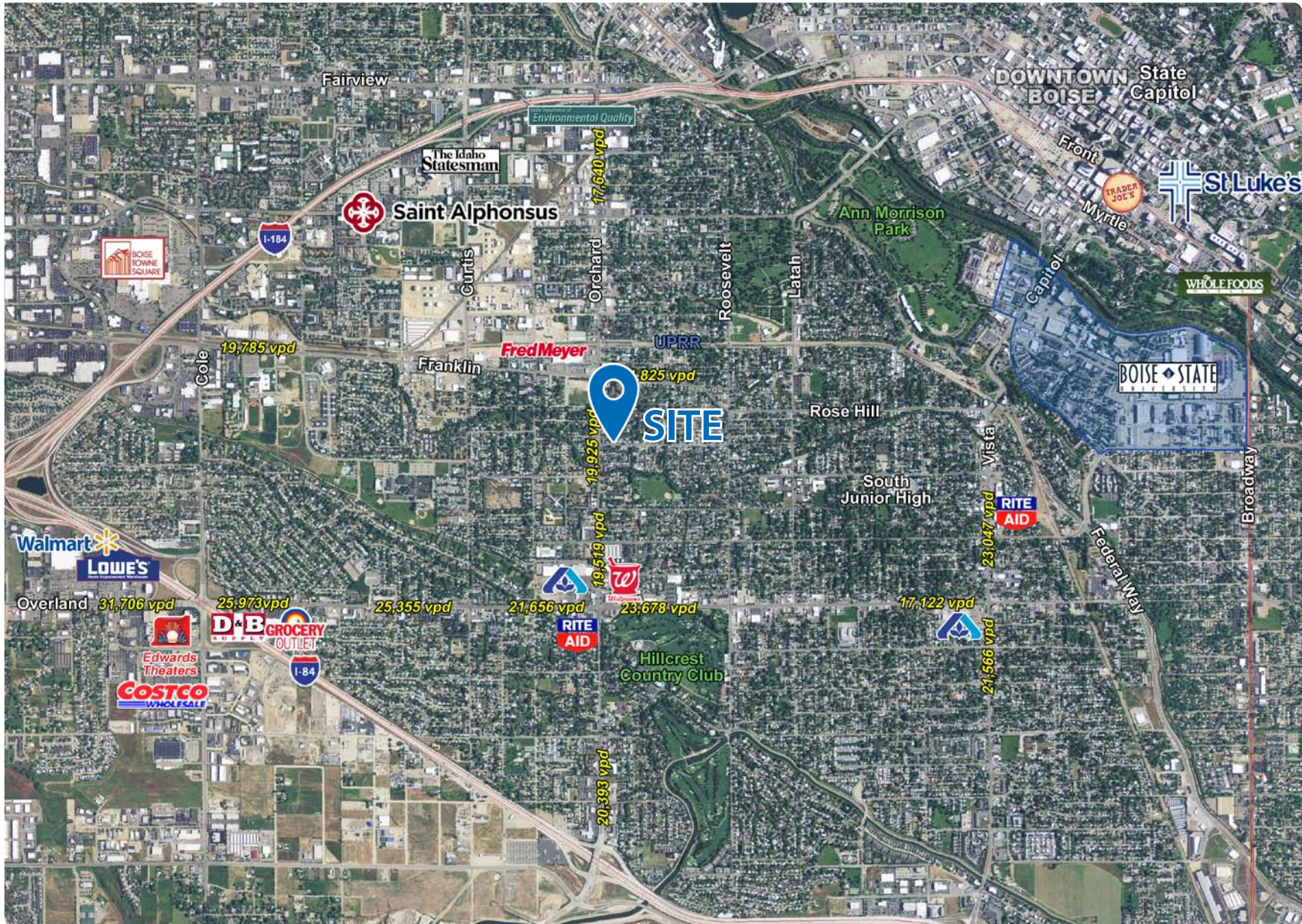
PLEASE CONTACT AGENT FOR SHOWING

420 ORCHARD STREET



This information was obtained from sources believed reliable but cannot be guaranteed. Any opinions or estimates are used for example only.

420 ORCHARD STREET



This information was obtained from sources believed reliable but cannot be guaranteed. Any opinions or estimates are used for example only.