

OFFICE SPACE FOR LEASE ALPINE BUILDING

12550 W Explorer Drive | Boise, Idaho 83713



PROPERTY INFORMATION:

Submarket:	West	Lease Terms:	3-5 Years
Bldg Type:	Office	Lease Type:	Full Service
Bldg Size:	22,941 SF	TI Allowance:	Negotiable
# of Floors:	2	Available:	Immediately
Quality:	Class A		
Parking:	4:1000		
Divisible:	Yes		

AVAILABLE SPACE:

SPACE:	RSF:	RATE:
Suite 160	3,261 SF	\$17.50/SF

LISTING COMMENTS:

- Professional business campus atmosphere in Boise Research Center.
- Great access to Eagle, Meridian, Garden City & Downtown Boise.
- Walking distance to shops and restaurants.
- Furniture in Suite 160 including, 9 cubicles 9' x 7' with desks built in and 1 cubicle 10' x 12' with desk built in.
- Fiber optics (Integra) available to the building.
- Two blocks from the West YMCA.

CONTACT:

Al Marino, SIOR

Ph: 208.947.0811

al@tokcommercial.com

Karena Gilbert

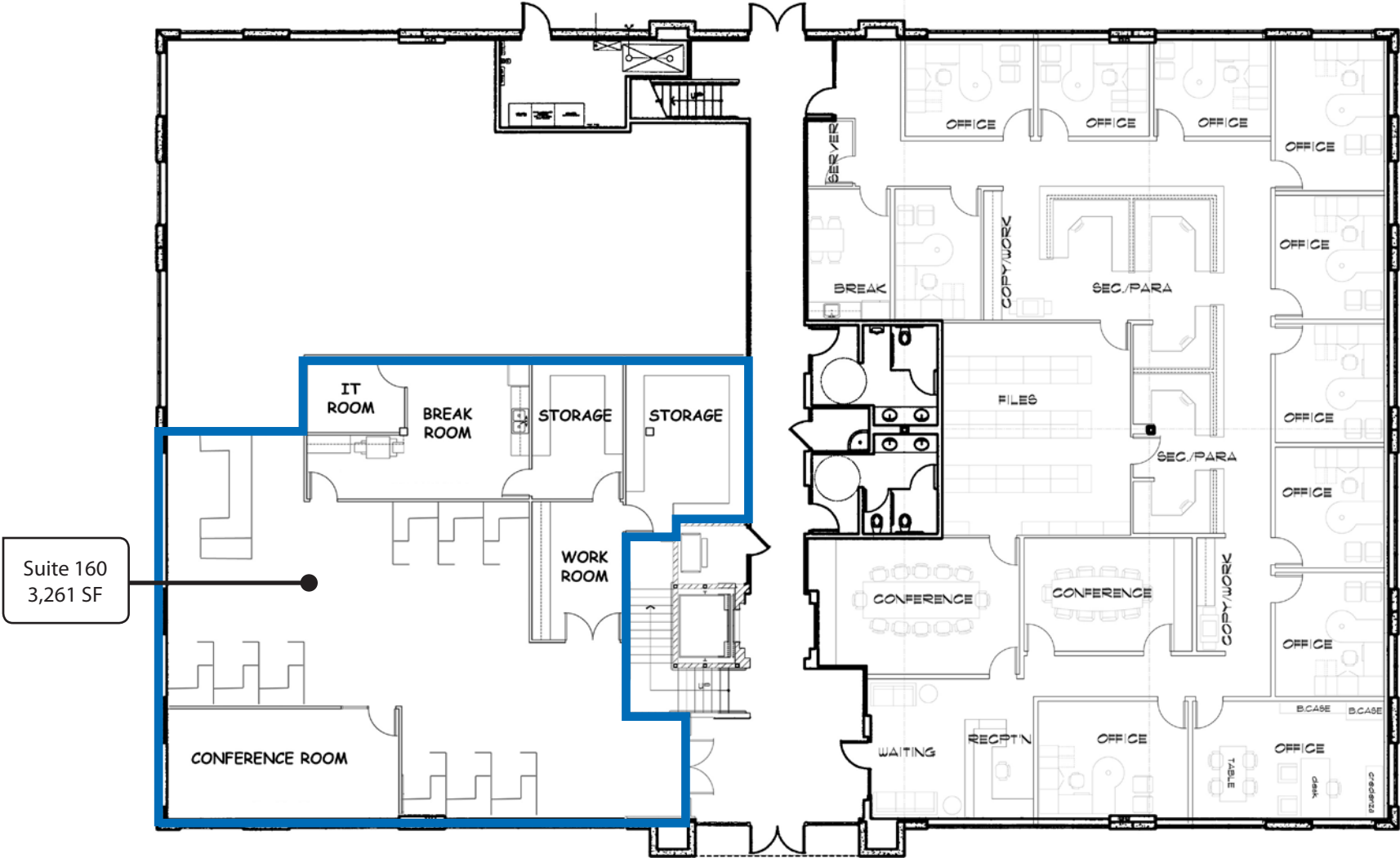
Ph: 208.947.0853

karena@tokcommercial.com

CONTACT AGENT FOR SHOWING



FIRST FLOOR PLAN



This information was obtained from sources believed reliable but cannot be guaranteed. Any opinions or estimates are used for example only.

OFFICE SPACE FOR LEASE ALPINE BUILDING

12550 W Explorer Drive | Boise, Idaho 83713



CONFERENCE TABLE

AVAILABLE FURNITURE IN SUITE 160

Conference room table

9 cubicles 9' x 7' with desks built in

1 cubicle 10' x 12' with desk built in



LARGE CUBICLE



SMALL CUBICLE

This information was obtained from sources believed reliable but cannot be guaranteed. Any opinions or estimates are used for example only.

THORNTON OLIVER KELLER

COMMERCIAL REAL ESTATE

Experience Results.

OFFICE SPACE FOR LEASE **ALPINE BUILDING**

12550 W Explorer Drive | Boise, Idaho 83713



BOISE RESEARCH CENTER

This information was obtained from sources believed reliable but cannot be guaranteed. Any opinions or estimates are used for example only.