

CENTURION BUILDING | BLDG. A

2147 S. CENTURION PLACE | BOISE 83709



GREAT I-84 ACCESS

FOR LEASE | 3,200 SQUARE FEET

PROPERTY INFORMATION:

Submarket:	Southwest	Zoning:	M-1D
Bldg Type:	Industrial	Available:	Contact Agent
Bldg Size:	3,200 SF	Grade Doors:	One
Clear Height:	Approx. 9'11"	Parking:	Ample
Grade Level:	1	Lease Term:	3 - 5 Years
Power:	3 Phase	Lease Type:	NNN
		Est. NNN:	\$685.33/Mo.

AVAILABLE SPACE:

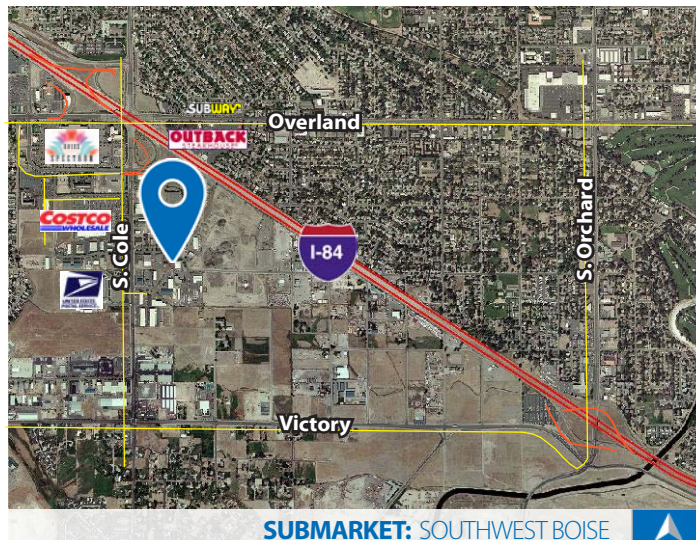
SUITE:	RSF:	RATE:	AVAILABLE:
BUILDING A			
2147	3,200 SF	\$0.60/SF, NNN	Immediately

CONTACT:

Chris Pearson, SIOR

Ph: 208.947.0859

✉ chris@tokcommercial.com



SUBMARKET: SOUTHWEST BOISE

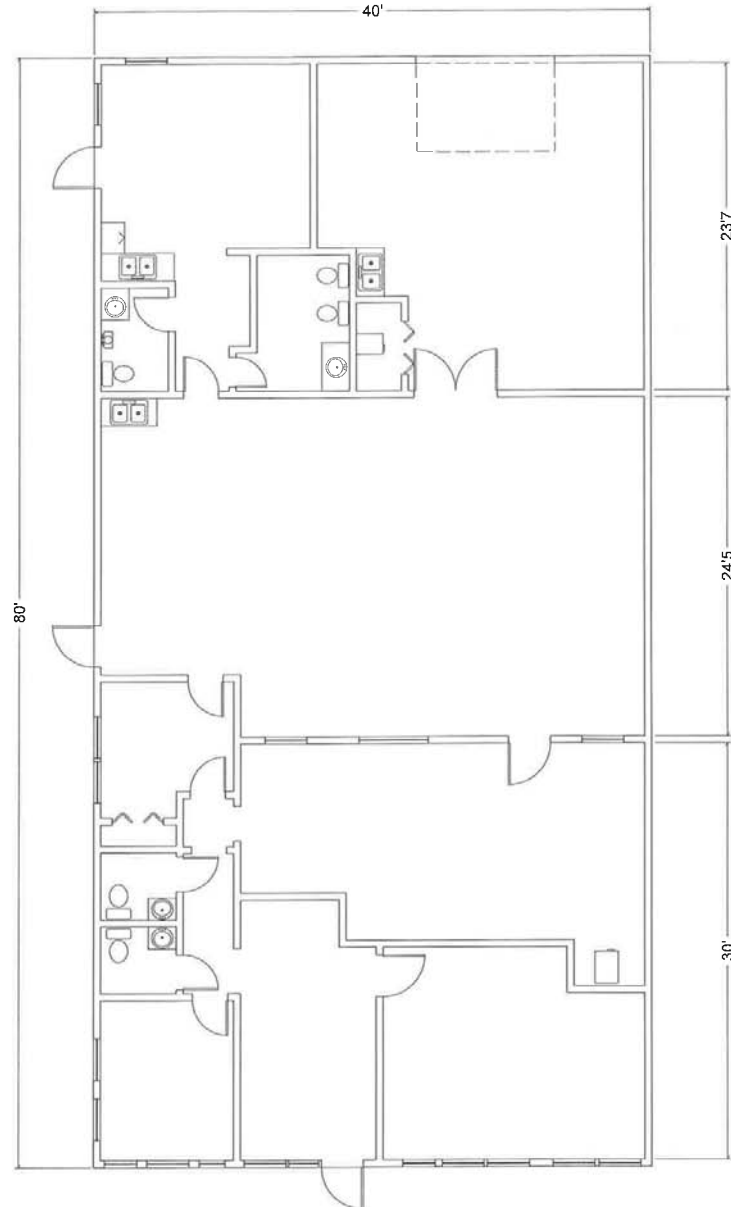
LISTING COMMENTS:

- Good exposure, just off Cole Road, near Costco.
- Excellent for small manufacturing.
- Fenced and secured yard space.
- Clean, climate controlled space.
- Great access to Interstate 84.
- Freestanding building.

CENTURION BUILDING | BLDG. A

FLOOR PLAN | BUILDING A

3,200 SF AVAILABLE



This information was obtained from sources believed reliable but cannot be guaranteed. Any opinions or estimates are used for example only.

CENTURION BUILDING | BLDG. A



This information was obtained from sources believed reliable but cannot be guaranteed. Any opinions or estimates are used for example only.