

OFFICE SPACE FOR LEASE OAK PARK PLAZA

2323 S Vista Avenue | Boise, Idaho 83705



PROPERTY INFORMATION

Submarket:	Central Boise	Lease Terms:	3-5 years
Bldg Type:	Office	Lease Type:	FLSVEJ
Year Built:	1999	Available:	Immediately
Lot Size:	1.674 Acres	TI Allowance:	Negotiable
Zoning:	C-2 Commercial		
Bldg Size:	32,256 SF		
# of Floors:	2		
Parking:	On-site		

AVAILABLE SPACE

SPACE	SIZE*	RATE
Suite 201	1,987 RSF	\$15.00
Suite 202	2,448 RSF	\$15.00
Suite 203	1,241 RSF	\$15.00
Suite 204	3,790 RSF	\$15.00
Suite 206	1,884 RSF	\$15.00

Suites may be combined up to approximately 11,350 RSF.

**Suite sizes are approximations and subject to architectural verification.*

PLEASE DO NOT DISTURB TENANTS - SEE AGENTS FOR SHOWING INSTRUCTIONS.

CONTACT

Karena Gilbert

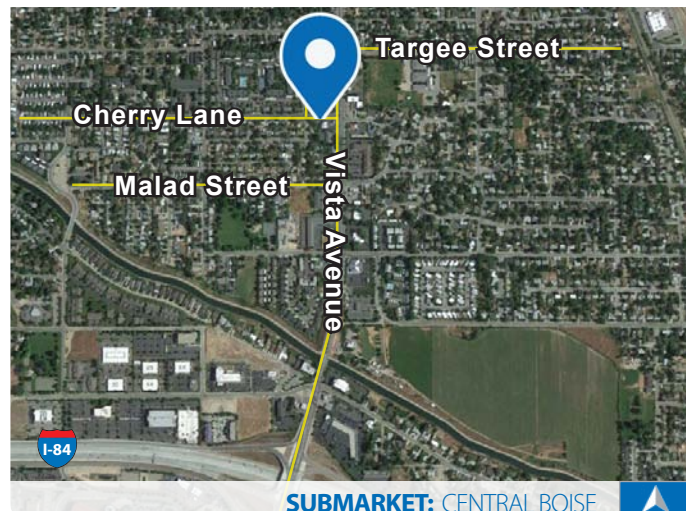
Ph: 208.947.0853

karena@tokcommercial.com

Nick Schuitemaker

Ph: 208.947.0802

nick@tokcommercial.com



SUBMARKET: CENTRAL BOISE

LISTING COMMENTS

Easy access to Airport / Downtown / I-84.

On-site parking.

Fiber optics available.

Lots of natural light with beautiful 2nd story views.

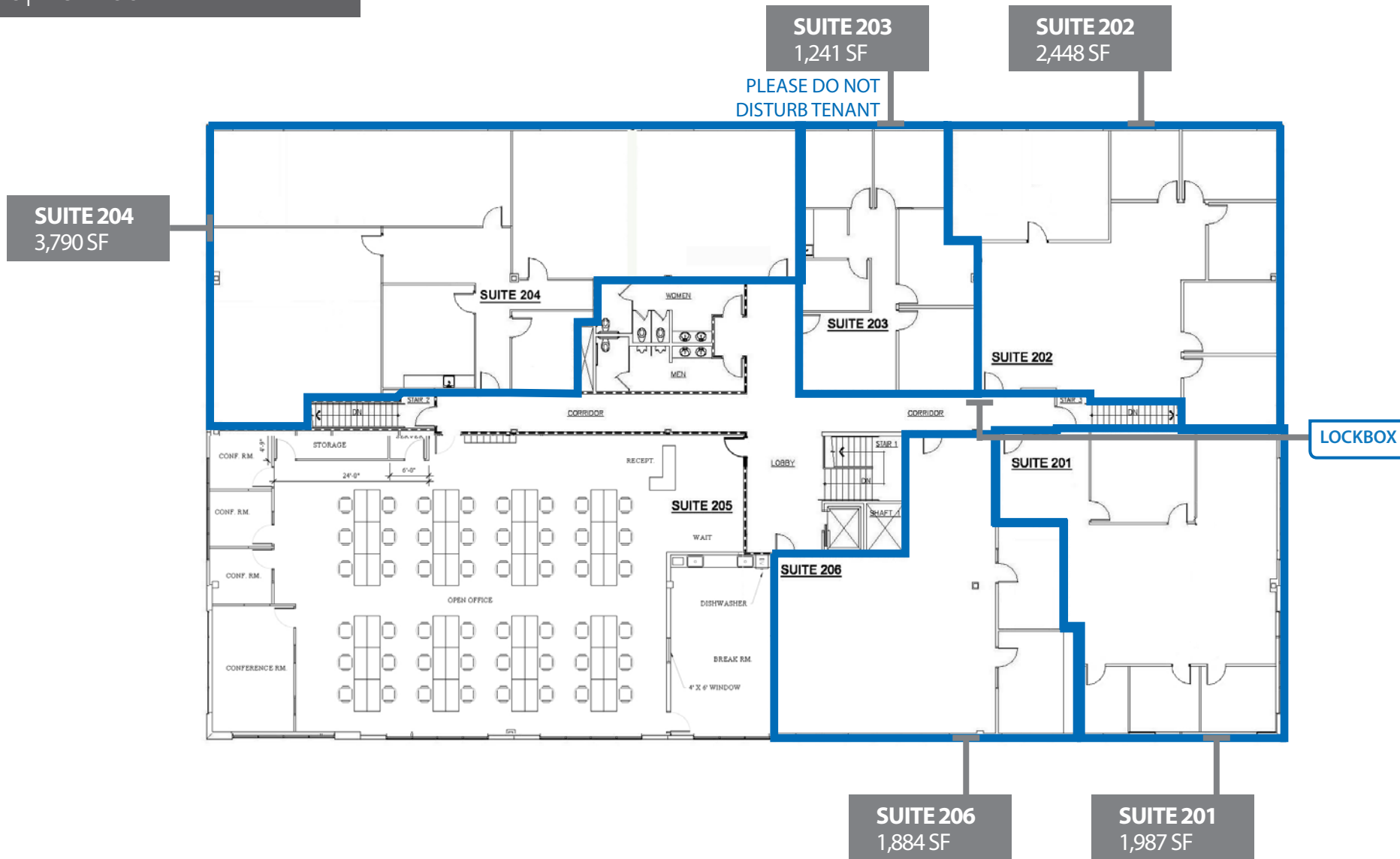
Walking distance to Willowcreek, Raw Sushi, Spitfire and Dutch Bros.

Great location on Vista Avenue with 18,916 vehicles per day.

OFFICE SPACE FOR LEASE OAK PARK PLAZA

2323 S Vista Avenue | Boise, Idaho 83705

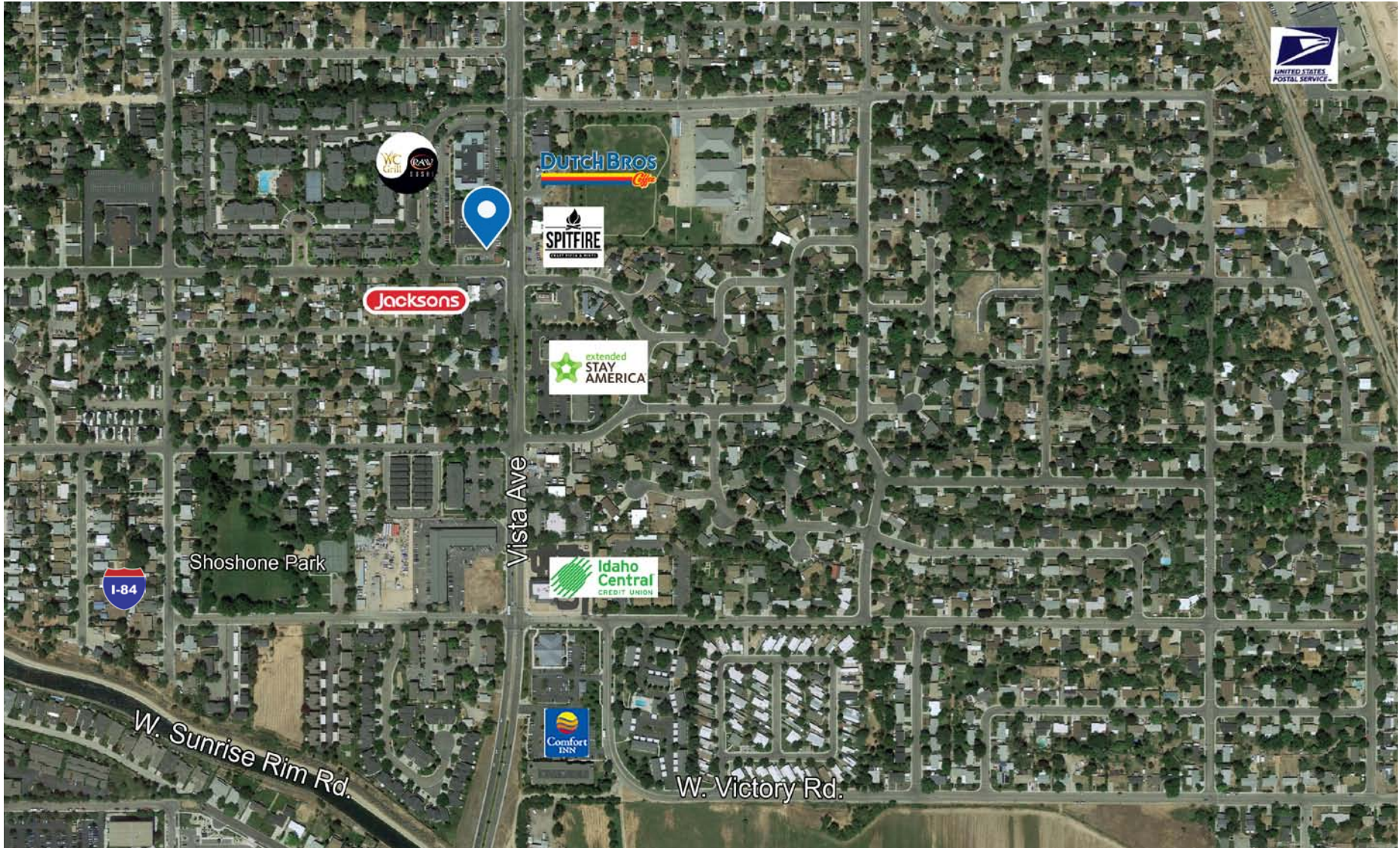
FLOOR PLANS | FIRST FLOOR



This information was obtained from sources believed reliable but cannot be guaranteed. Any opinions or estimates are used for example only.

OFFICE SPACE FOR LEASE OAK PARK PLAZA

2323 S Vista Avenue | Boise, Idaho 83705



This information was obtained from sources believed reliable but cannot be guaranteed. Any opinions or estimates are used for example only.

OFFICE SPACE FOR LEASE OAK PARK PLAZA

2323 S Vista Avenue | Boise, Idaho 83705

PROPERTY SITE PLAN



This information was obtained from sources believed reliable but cannot be guaranteed. Any opinions or estimates are used for example only.